

# Tips for how to display your NZ COVID Tracer poster

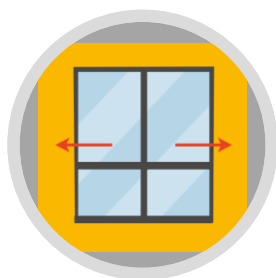
(no need to print this page, print page 2 only)

## DO



- ✓ Print in A4, colour if possible. Do not crop parts out
- ✓ Place at least one poster approx. 130cm off the ground (to the top of the poster)
- ✓ If possible, place it on the left side of your front window or entrance
- ✓ You can print as many copies as you like
- ✓ Display the poster at every entrance and you can place some inside too
- ✓ Place it where people can walk past without creating an obstacle
- ✓ Make it easy for people to reach, and consider those that may be less able to reach over or around objects

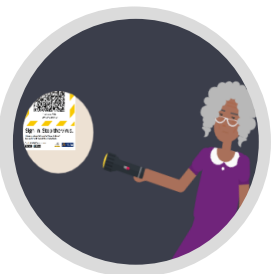
## DON'T



Place the poster on sliding or revolving doors



Place in an area with high glare



Place in narrow, or hard to see areas



Place high up or in hard to reach areas

SCAN HERE TO SIGN-IN WITH  
THE NZ COVID TRACER APP



West End Lawn Tennis Club

2 Fife Street, Westmere, Auckland

# Sign-in. Stop the virus.

Help protect yourself, your whānau, and your community with our contact tracing app.

Search NZ COVID Tracer app now:



Unite  
against  
COVID-19



MANATŪ HAUORA